

# SYDNEY CDI



30 April - 3 May 2025 Sydney International Equestrian Centre [w:sydneycdi.com](http://w:sydneycdi.com)

---

The Organising Committee and Dressage NSW would like to thank you for your entry and support of the SYDNEY CDI. We look forward to welcoming you soon at the wonderful Sydney International Equestrian Centre.

## COMPETITOR INFORMATION

**Horse Arrival:** **Monday 28 April from 12pm**, unless otherwise arranged to arrive on Sunday 27 April between 3 and 5pm. Please schedule your arrival during this time. Arrival times on other days see page 3.

**Notice for QLD competitors:** Riders travelling from QLD are required to complete a Record of Movement Form when travelling and supply the venue with a Record of Movement (ROM) number, as well as the competitor's name and contact information. **Click here for a link to the form.**

**Freestyle competitors:** We will be testing music prior to the event and no times have been set for music testing other than for the Grand Prix. A link to upload your music will be posted on the competitor page on the website.

CDI3\* GP Freestyle competitor's music tests will be held in the Indoor arena on Saturday morning from around 7.30am. Riders may note the time they would like on the timetable at the Rider Info Office otherwise they will be allocated in order of the draw.

DOD (Degree of Difficulty) Freestyle Judging will be in place for the CDI3\* GP Freestyle. More information will be sent to relevant riders in the CDI3\* GP Freestyle.

**Withdrawals/Scratchings:** During the competition, from Wed. to Sat. all competitors who withdraw from a competition must complete a withdrawal form and hand it in to the Event Office. Withdrawal forms will be available from the Riders Info Office and the Event office. The refund policy is included in the conditions of entry.

**Presentation Timetable:** We are introducing more Mounted Presentations at this event. To make this work we need the full cooperation from all riders, grooms and owners to be well prepared. If you are unable to attend due to other commitments, you need to make your apologies beforehand or ask someone to represent you and/or collect your rosette. Failure to comply will result in forfeiting prize money and prizes.

*🌸 Thank you Glenhill Sporthorses for sponsoring the Happy Hour combined with the presentations on Thu & Fri. 🌸*

**Time Draws:** The time draw for CDI 1\*, 3\*, CDIU25 & CDIY, CDIJ, CDICH will take place after the Fitness Inspection, on Wednesday.

The draw for all national competitions is available on the event website. Once the competition is underway, all updated draws & results will be available on the [Equestrian Hub website](#).

**Young Horse Finals:** The format will be a little different this year as we have a guest rider for the Final. The winner and runner up from the 4/5/6- & 7-year-old horses from Round 2 will be eligible for the Final on Saturday starting at noon. The guest rider, Jye Thurgate will ride the finalists and make a comment about their ride after each horse. The guest rider and the judges will determine the Champion in each age group.

**Young Ponies:** All ponies in the second round will be judged by the same panel of judges. The winning pony in each age group in round 2 will compete in the final round to determine an overall Young Pony Champion.

The ponies will ride the same test they rode in round 2 in front of a panel of judges to determine the Overall Young Pony Champion. A mounted presentation for the overall winning Pony will be held straight after the Young Pony Competition.

Horses that don't qualify for round 2 can compete in EA consolation official (Novice or Elementary) competition on Friday. Riders are to confirm their intention to compete on Thursday after Round 1.

**Pony measuring** for young horse ponies will take place on Thu morning from around 7am. Ponies without a current height certificate will not be allowed to compete. Please contact Jo Gunn, 0414 416 362 or email Jo on [jo.gunn@me.com](mailto:jo.gunn@me.com) if you wish to put your name down to have your pony measured. This service only applies for ponies entered in this event. A fee is payable.

## GENERAL INFORMATION

**Rider Welcome BBQ**, for all riders, partners, owners and grooms will take place at 6.30pm on Wednesday, 30 April in the Rider Retreat, sponsored by **Mulawa Performance & Wild Oats** wines.

All competitors can collect their **Souvenir Stable Plaque**, sponsored by **THEAULT** and a copy of the programme booklet from the event Rider Info Office located at the Event Square in front of the stables from Wednesday.

**Accreditation/Tickets:** Riders are entitled to free entry, along with one groom per horse, one owner per horse (where different to the rider). Riders, grooms and owners will receive a “wrist band” on arrival at the venue. The “wrist band” will allow the wearer to be admitted to the grounds daily and into the stables.

**Tickets:** This is a ticketed event and admission fees apply from Thursday to Saturday. Seating in the indoor is allocated. Seating: Seats 120-169 rows A/B/C/D will be reserved for competitors/grooms/owners.

**Owners:** Owners that don't travel with their horses to the event should advise Toni if they wish to have passes emailed to them before the event, email Toni on [toni.venhaus@bigpond.com](mailto:toni.venhaus@bigpond.com) no later than 20 April. To process the tickets we need the name of the owner, horse name, post code, mobile number and email address. Tickets will be emailed out. It is important that riders take responsibility to make their owners aware of these arrangements. Failing to request tickets prior to the event means owners may not be granted free access to the venue where admission fees will apply.

**Tickets on the Terraces:** A 10% discount applies for 2 tickets per rider or owner for Tickets on the Terraces Thu, Fri & Sat day sessions. More information on the website. The discount will be refunded after purchase on TryBooking. [Click here for bookings](#)

**Arena Familiarisation:** Please refer to the timetable that is on the competitor section of [www.sydneycdi.com](http://www.sydneycdi.com), the times may be updated if the competition programme changes.

**Prize money** will be credited to bank accounts within 10 working days of the competition. Many competitors did not provide this information, this will delay payment. If you are unsure of whether you provided the correct information, contact Toni.

**AOR competitors** A rosette will be presented to the highest placed AOR in the National (CDN) competitions PSG to GP (excluding freestyles). Only one rosette will be presented if these placegetters are in the overall placings for a competition. The data we received is incomplete so please [email Toni](#) confirming your status if you are an AOR.

## SADDLERY & EQUIPMENT

Competition rules/conditions apply once horses arrive at the venue.

**Horse ID** (bridle numbers), please use your existing bridle number. In the case of a double up of numbers, the OC have allocated one of the combinations with a temporary bridle number for this event. The relevant riders have been informed by email. Please note that bridle numbers (one on each side) must be displayed on the horses saddlecloth, bridle and/or halter **at all times** other than when the horse is in the stable, this rule applies to all horses. Competitors grazing horses must take extreme care and have horses in full control of the handler, if grazing horses appear to be upsetting competing horses or horses under saddle they will be asked to return to the stable enclosure.

**Saddlery & Gear:** As per EA rules for national competitions. As per FEI rules for FEI CDI sanctioned competitions.

## STABLES

The stable allocation will be posted on the website at least 10 days prior to the event. Mandy Jones is allocating stables. All CDI horses will be stabled in the same block.

In line with FEI rules for a CDI, it is compulsory for all CDI 3\*, CDI 1\*, CDIU25, CDIY, CDIJ/P/Ch horses to be stabled on site during this event from Wednesday, 30 April until after the horse's last competition.

**There will be overnight security at the event from Wednesday 6pm until Sunday 6am.**

Competitors, we recommend a notice containing the contact details of the person responsible for the horse on the front of each stable door in case of emergency.

**Communal Tack rooms**, due to the number of horses stabled at the event it may not be possible to allocate shared tack rooms. If you booked a private tack room, please leave these swept and clear out any feed or mess when you leave. You will need to bring a padlock should you wish to lock your private tack room. Please don't lock shared tack rooms. Preference for private tack rooms will be given to competitors staying for longer periods.

**Late bookings**, adjustments of bedding can be made on Nominate – [click here](#)

**Bedding:** Any bedding requested during the event must be paid for at the time of ordering, orders must be made at the Rider Info Office.

Shavings ordered with stable bookings will be placed in the stable. A limited supply of bedding will be available to purchase at the venue at \$20 per bag of shavings. Bookings will remain open on Nominate or you can pay by credit card at the rider office.

A limited number of rakes/shovels and wheelbarrows will be available, but please bring your own feed/water buckets.

**Horse Arrival times** are during day light hours only. On Tue arrival time is 8am to 5pm and on competition days, from 6.30am daily to 5pm.

**SMOKING** is not permitted in stables or stable aisles. Stable accreditation will be denied to those who do not observe this rule.

**Bikes** are not permitted in the stables. Golf buggies or similar are permitted only during unloading of gear on arrival or loading of gear on departure. Dogs are permitted in the stables but must be on a short lead and always supervised. PLEASE do not tie dogs in the aisles or leave them unattended.

**Lunging Yards** in the stable area are for lunging horses only, no horses are to be left unsupervised in the lunge yards at any time.

EA Stallion Policy applies. If your horse is a stallion, the EA Stallion Identification Card with a green background must be placed on the outside of the stable or yard. Download the card from the EA website [\[here\]](#).

**Stable Bonds.** As per the conditions of entry, a cleaning fee/bond of \$100 per stable has been paid with entries. This fee will be not refunded if the stables are not left completely empty and clean. All bedding is to be removed and stables swept prior to departure. Please ensure private and shared tack rooms are also left swept clean prior to departure.

**Stable cleaning.** Contact Stable Manager Tel. Nick Mougios If you would like to have your stable cleaned for you. Cost \$50 per stable to be paid direct to Nick. Tel 0416 138 639 - or em: Tacen@live.com

**Produce & Deliveries:** Leppington Feed Supplies, 02 9606 5427. To ensure delivery, please phone your order in time for the delivery and advise your stable #. Macarthur Stockfeeds 0459 021 788 (will deliver most days). To ensure delivery, please place your order in time for the delivery on these days and advise Feed Merchant of your stable number.

**Day parking** is in P1 parking area above the main arena. Horses may not be left in day yards overnight. All stallions must be stabled.

## **CAMPING & CABINS**

Camping and cabin allocation will be posted on the website by middle of April. Changes or additions to camping requests can be made on Nominate. Vehicles parked in camping area that are not campers may be towed away. Please do not block the camping area with your vehicles. the number of campers in the south camping area has been reduced. Large trucks and short stay campers will be allocated camping in the North Camp/car Park or the P3 area.

**Camping sites in P3.** Please only park in the spot allocated as we need as much car parking sites as we can for Saturday evening spectators.

All camping vehicles must have a power lead, that has been tested and tagged by a certified person, connecting to the power outlets. Please make sure that any leads you have connected to power have a current approved tag attached to the lead or you may be disconnected from power. Please note SIEC charges us for each lead so if you have multiple leads plugged in you need to pay for each plug.

**Cabin keys:** There will be no deposit for cabin keys and we ask that all cabin keys are returned to the rider info office before you leave the venue. If the rider info office is closed, you can return keys to the event office in the indoor or leave the key in the cabin door. Some cabins may have different people checking in and out, if this is the case, please vacate the cabin by 2.00pm

**Car Parking:** Car parking is available on site. Please follow instructions from the Centre Management staff regarding where to park your vehicles. Floats/trucks/cars can be parked along the roadway opposite the cabins. Vehicles are not allowed in the competition and training areas. Please do not block access to camp sites and cabins with vehicles or floats.

**Facilities:** We request that competitors take the utmost care in looking after the wonderful facilities provided. SIEC is located within a Regional Park and is environmentally sensitive. Please take pride in this fantastic venue and keep the toilets and amenities block clean. Dogs must be always on leash and please don't bring dangerous or aggressive dogs to the event.

Please take care when walking in bush areas as snakes are about (although not such an issue in autumn). A large goanna and friend are common visitors to the area around the rider retreat and camping areas.

- **Bicycles** – If you have a bicycle at home, we suggest you bring it along as the distance from the stables to arenas is significant.

S.I.E.C. management requests that helmets be worn. The roads are designated "public roads" and normal road rules apply, please be aware horses always have right of way. Bikes and other modes of transport are not allowed in the stable area. Prams not permitted in stable aisles for safety reasons.

**Catering:** The catering outlet located on the Event Square in front of the stables will be open from Tuesday midday. Breakfast will be available from Wednesday. The café located in the indoor will be available from Wednesday.

**Arrival at Sydney International Equestrian Centre (S.I.E.C.)** Competitors arriving at the venue for the first time with horses in tow will be admitted to the grounds. After this initial entry, you must show your accreditation (wrist band) to gain entry. Access to SIEC is via Saxony Rd. Saxony Rd is approximately 1km south (towards Elizabeth Drive) of the Horsley Drive intersection on Wallgrove Rd. There is a roundabout on Wallgrove Rd at Saxony Rd. Once on Saxony Rd there is another roundabout approximately 800m east into the entrance of SIEC. Once inside the SIEC follow the new access road along past the indoor arena and on to the stables.

Proceed to horse unloading area in front of the stable block. After unloading horses, tack and feed, please move your vehicle without delay either to the assigned camping location or to the car/float parking area.

SIEC is located just off the M7 motorway. Coming from the north you take the Horsley Park exit, turn right at the exit and then turn left into Wallgrove Road. Coming from the South, you take the Elizabeth Drive exit, go straight ahead at the traffic lights along Wallgrove Road, then into Saxony Road. There is a toll on the M7 which you can pay within 48 hours.

**Toll number:** 13 86 55

Please note there is no ATM at the venue.

The Rider info office is also cash free and any purchases for bedding must be done credit card EftPos.

**Test papers:** Competitors will be able to access their test papers and results via the personal Blackhorse Dashboard, see last page for details.

## Riders Welcome BBQ

6.30pm in the Riders Retreat - **Wednesday 30 April 2025**

Sponsored by **Mulawa Performance & Wild Oats Wine**

All invited, riders, grooms, owners & officials, join in and get the event off to a great start!

## Friday Night – Fish & Chips

After the presentations while watching the CDN Grand Prix Freestyle,  
sponsored by **Palm Beach Motor Yachts**

Come along, support the riders and enjoy **Fish & Chips** from the Indoor Café.



The bar will be open!



---

## Information specific to the CDI 1\*, 3\*, CDIU25, CDIY/J/P/Ch

**Arrival Inspection:** Horse arrival inspections will take place where possible when horses arrive at the venue. Otherwise on Wednesday morning the Vets will be in waiting in the middle of the stable complex (near the tree). Riders are to present their horses to the Vets. All horses must be checked before 12pm. Have your papers with you, your phone with the FEI HorseApp for temperature checking and a thermometer for taking horse's temperature and no rugs or bandages on the horse.

The Fitness Inspection (Trot-up) is scheduled from 2.30pm in the Indoor Arena. A timetable is published on the website.

### FEI Horse Health Requirements

ALL Horses competing in the CDI Events must fulfil the Horse Health Requirements via the FEI HorseApp. Competitors, grooms and owners all need to be aware of the Horse Health Requirements. All the information on the requirements can be **found here**.

The App requires all competitors to complete certain requirements in the lead up and during the event.

Start taking your horse's temperature at least 3 days prior to the arrival at the venue. Temperatures must be taken and recorded on the App twice daily

Competitors with horses competing in national competitions that are stabled with CDI horses, must also record and keep a log of these horse's temperatures. The log must be available for viewing by FEI Vets

You can download the App from the App Store or Google Play – [click here](#)

- FEI registration: All horses and riders taking part in the CDI competitions must be registered on the FEI database. If your registration and papers are not in order you will not be entered into the FEI system and therefore not able to start at the event.
- CDI competitors need to be aware that ALL Vets and attending horses in the CDI competitions must hold an FEI Recognition Card, Equine Therapists & Supportive therapies: The FEI Veterinarian Delegate must approve all types of supportive therapies.

### FEI WELFARE OF THE HORSE - CODE OF CONDUCT

1. The Fédération Equestre Internationale (FEI) expects all those involved in international equestrian sport to adhere to the FEI's Code of Conduct and to always acknowledge and accept that the welfare of the horse must be paramount and must never be subordinated to competitive or commercial influences.
2. At all stages during the preparation and training of competition horses, welfare must take precedence over all other demands. This includes good horse management, training methods, farriery and tack, and transportation.
3. Horses and competitors must be fit, competent and in good health before they are allowed to compete. This encompasses medication use, surgical procedures that threaten welfare or safety, pregnancy in mares and the misuse of aids.
4. Events must not prejudice horse welfare. This involves paying careful attention to the competition areas, ground surfaces, weather conditions, stabling, site safety and fitness of the horse for onward travel after the event.
5. Every effort must be made to ensure that horses receive proper attention after they have competed and that they are treated humanely when their competition careers are over. This covers proper veterinary care, competition injuries, euthanasia and retirement.

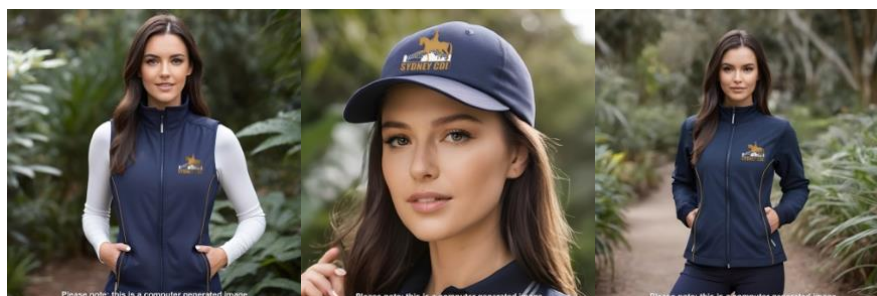
The FEI urges all involved with the sport to attain the highest levels of education in their areas of expertise.

Please refer to the FEI Dressage Rules and FEI General Regulations for full details.

- **EA Codes of Conduct:** [Click here for details](#)



**Event merchandise** available from the info stand located at the indoor arena



Polo shirts - \$75; Vets \$130, Jacket \$150, Caps \$25



## HEALTH & SAFETY ALERT

### ELECTRIC SCOOTER USE AT NSW EQUESTRIAN EVENTS

**WHAT HAPPENED**

At a recent event, a person riding an electric scooter during an event at SIEC lost control and was ejected from the scooter. They sustained serious abdominal injuries and underwent emergency surgery.

**ROOT CAUSE: FOLLOWING INVESTIGATION**

Electric scooters are increasingly being used to travel around the grounds at equestrian events with most people being unaware that they are illegal for use except on private property.

SIEC, AELEC, Public Showgrounds, etc are **NOT** Private Property.

NSW Police have issued the flyer on the right to clarify electric scooter use within NSW.

**ACTIONS REQUIRED**

- Competitors and their support teams must not bring electric scooters, hoverboards or electric skateboards to equestrian events held on public property.
- Mobility scooters designed for the mobility impaired are allowed.
- Bicycles, motorised bicycles and unpowered scooters are allowed – a helmet must be worn.
- Where events are held on Private Property check with the event coordinator to determine whether electric scooters are permitted under their event risk management plan prior to bringing them to the event. If allowed wearing a helmet would be recommended.

Issued by Vireena Peacock (Acting CEO)



## MOTORISED WHEELED DEVICES

**Devices such as electric scooters, skateboards, and hoverboards are **ILLEGAL** in NSW.**

Although a motorised scooter, skateboard, or hoverboard (electric or petrol powered) are considered motor vehicles, they do not satisfy the Australian Design Rules and for this reason, cannot be registered in NSW and are unable to be insured.

These devices cannot be ridden on roads, or road related areas (such as footpaths shared paths and cycleways) in NSW, except on private land.







**Anyone caught riding a motorised device on a road or road related area in NSW can face fines starting from \$723**

Further information is available at [roadsafety.transport.nsw.gov.au](https://roadsafety.transport.nsw.gov.au) 

January 2023

## Scoresheets online after the competition

### National Competitions

---

#### Scoresheets online



Available right after  
the class:

[equestrian-hub.com](https://equestrian-hub.com)

Equestrian Hub



Questions?  
[support@blackhorse-one.com](mailto:support@blackhorse-one.com)

### CDI Competitions

---

#### FOR CDI ONLY

#### Scoresheets online



Available directly  
after the competition under:

[dressage.performancedashboard.fei.org](https://dressage.performancedashboard.fei.org)



Need help? Contact us at:  
[edressage@fei.org](mailto:edressage@fei.org)



**Results:** <https://equestrian-hub.com/show/193294>

## Contact telephone numbers and information

<b>Event Director:</b>	Toni Venhaus 0418 686 781 em: toni.venhaus@bigpond.com
<b>Rider Info, Stable/camping</b>	Cathie Drury Klein 0417 224 432 or cathiedk@bigpond.com
<b>Event support</b>	Jo Gunn, 0414 416 362 em: jo.gunn@me.com Marjolyn Thomas (Presentations) 0428 671 338, Mandy Jones (Stable Allocation) 0415 224 977 Mary Houghton: 0409 841 089 em: admin@dressagensw.com.au
<b>Scratching/withdrawals</b>	Toni Venhaus, Mandy Jones or Jo Gunn (see above) contact details)
<b>President of Ground Jury</b>	Ricky MacMillan 0418 758 149
<b>National TD</b>	Mary Seefried 0408 010 536
<b>Stable Manager</b>	Nick Mougios 0416 138 3639
<b>FEI Chief Steward (Camping)</b>	Cathie Drury Klein 0417 224 432 or cathiedk@bigpond.com
<b>FEI Vet Delegate</b>	Dr Derek Major 0428 249 119
<b>FEI Treating vet</b>	Dr Marnie Treseder 0430 224 182
<b>Cabin enquiries:</b>	Toni Venhaus 0418 686 781
<b>Vets:</b>	Randwick Equine (opposite venue) 02 9399 7722 Veterinary Clinics: Agnes Banks EC - 02 4588 5200; Camden Equine Clinic 02 4655 0777, after hours – 0412 462 588 (only monitored outside of office hours) Wollondilly Equine Clinic - 02 4659 7322, Hawkesbury Equine - 02 4577 4611
<b>Farrier/s:</b>	Josh Robinson 0435 446 562, Rodney Brazzil 0414 599 291, Brett Hudson 0412 113 365; Matt Scott 0424 826 881;
<b>Feed Supplies:</b>	Leppington Feed Supplies, 02 9606 5427. To ensure delivery, please phone your order in time for the delivery and advise your stable #. Macarthur Stockfeeds 0459 021 788 (will deliver most days)
<b>S.I.E.C.</b>	02 8883 6900. Direct line to the Event Office (during event only) 02 8883 6918
<b>M7 Toll</b>	Tel: 13 86 55 (48 hours to pay) For point to point directions on how to get to SIEC, check the web site: <a href="http://www.equestrian-centre.com.au">www.equestrian-centre.com.au</a>
<b>Medical</b>	Fairfield District Hospital, Address: Polding Street (cnr Prairie Vale Road), Prairewood, Tel. (02) 9616 8111
<b>Laundry facilities</b>	Liverpool Laundromat – Coin op. 345 Macquarie St, Liverpool Tel: 02 9822 4583 Liverpool Easy Wash Laundry Cnr Hume Hwy & Goulburn Sts, Warwick Farm Tel: 9822 8585 Fairfield Coin op Laundry: 46 Hamilton Road, Fairfield Tel: 02 9727 4494
<b>Eating out:</b>	Rosetti's Italian Restaurant, 27/1042 The Horsley Drive, Wetherill Park Market Town, Tel. 02 9756 5560 (they will deliver pizza, \$20 approx min order) Candelori's Ristorante & Bar, 685 The Horsley Drv, Smithfield. Tel. 02 9729 1155 (licensed) Royal Cricketers Arms: 385 Reservoir Rd Prospect NSW 2148 Tel. 02 9622 6498 (lovely old pub with great steaks). Take the M4 going towards city, and take Blacktown exit and then turn right, passing under the freeway) Cafés and Pizza place at Horsley Park shops (turn left at the roundabout), IGA & Deli at Horsley Park shops Alpha Hotel at Eastern Creek, Bars and restaurant Tel. 02 8889 7700 Atura Hotel, Prospect Tel.02 9421 1000 Novatel Rooty Hill, restaurants and access to eateries in the RSL. Mercure, Liverpool has several restaurants in the hotel and adjoining Catholic Club.